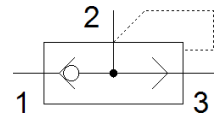
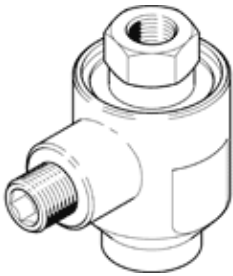


# quick exhaust valve SE-1/2-B

Part number: 9688

FESTO



## Data sheet

Feature	Value
Valve function	Quick exhaust
Pneumatic connection, port 1	G1/2
Pneumatic connection, port 2	G1/2
Mounting type	Threaded
Standard nominal flow rate, exhaust	6,480 l/min
Standard nominal flow rate for pressurisation 6->5 bar	4,560 l/min
Operating pressure	0.3 ... 10 bar
Ambient temperature	-20 ... 75 °C
Material housing	Aluminium die cast
Operating medium	Compressed air in accordance with ISO8573-1:2010 [7:-:-]
Nominal size	15 mm
Assembly position	Any
Note on operating and pilot medium	Lubricated operation possible (subsequently required for further operation)
Medium temperature	-20 ... 75 °C
Product weight	200 g
Pneumatic connection, port 3	G1/2
Material seals	NBR