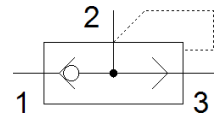
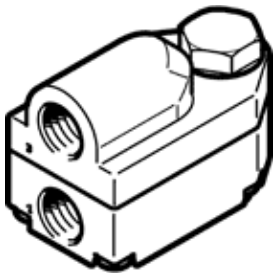


quick exhaust valve VBQF-D-G14-E

Part number: 548003

FESTO



Data sheet

Feature	Value
Valve function	Quick exhaust
Pneumatic connection, port 1	G1/4
Pneumatic connection, port 2	G1/4
Mounting type	Threaded
Standard nominal flow rate, exhaust	1,500 l/min
Standard flow rate for exhaust 6→0 bar	2,500 l/min
Standard nominal flow rate for pressurisation 6→5 bar	960 l/min
Operating pressure	0.5 ... 10 bar
Ambient temperature	-20 ... 80 °C
Material housing	Aluminium die cast Zinc die-casting
Operating medium	Compressed air in accordance with ISO8573-1:2010 [7:4:4]
Nominal size	7 mm
Assembly position	Any
Note on operating and pilot medium	Lubricated operation possible (subsequently required for further operation)
Corrosion resistance classification CRC	1 - Low corrosion stress
Medium temperature	-20 ... 80 °C
Product weight	253 g
Pneumatic connection, port 3	G1/4
Materials note	Conforms to RoHS
Material seals	NBR